

# Easily understand how your business uses energy

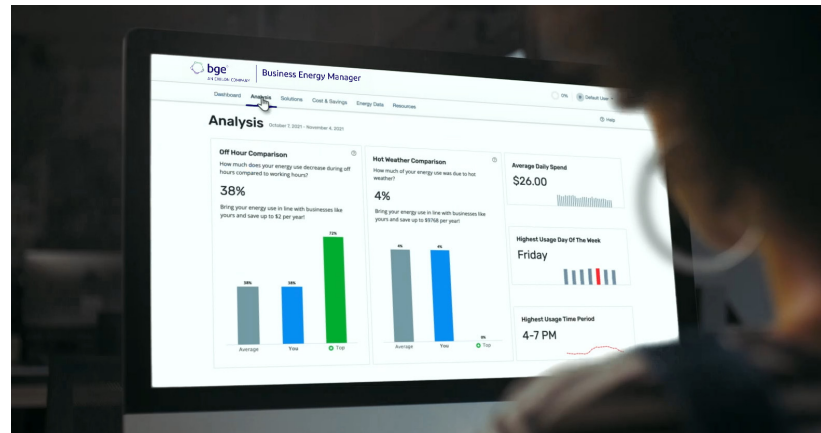
## Real-time data, real-world results

**BGE Business Energy Manager** can monitor and analyze your energy use in real time and show you how weather impacts your operation. You can also use the tool to generate and export custom reports, charts and graphs. It will even recommend energy-saving strategies.

## Your all-in-one solution for savings

With **BGE Business Energy Manager**, you'll have access to programs offering energy efficiency tips, customized recommendations and incentives for upgrades that can boost your bottom line.

- Get technical assistance and financial incentives for energy efficiency upgrades.
- Save up to 85% on services that optimize the performance of your existing equipment.
- Spend less at checkout on select LED lighting, HVAC equipment and commercial food service equipment when you shop participating distributors.
- Save up to 85% on upgrades to lower your energy costs and get an energy analysis for small businesses at no additional cost.



## Uncover opportunities for greater energy efficiency

Taking control of energy use and managing costs are top priorities for businesses of all sizes. Curious about how your company consumes energy—and how you can save more of it?

**BGE Business Energy Manager** is here to help you make sense of your energy data. It's powerful, simple to use and comes at no additional charge to your business.

Scan the **QR code** or visit **BGE.com/BEM** to sign up today.



# Get started with BGE Business Energy Manager in four easy steps

**1** Sign up at [BGE.com/BEM](https://www.bge.com/BEM) using your BGE Business Account Number and your primary facility's ZIP code.

**Create Your Account** Step 1 of 4: Verify your BGE Account

Step 1 BGE Account Information	<p>Please provide the following account information to verify that you are a current BGE customer.</p> <p><b>Account Number</b></p> <input type="text"/>
Step 2 User Information	
Step 3 Company Information (Optional)	
Step 4 Email Confirmation	
<p><b>ZIP Code of Your Business Location</b></p> <input type="text"/>	
<p><a href="#">Continue to Step 2</a></p>	

**2** Enter your company email address and create a password.

Step 1 BGE Account Information	<p>It's time to create your user profile. Your email address will act as your username. Next, create a password. These two items will allow you repeated access to Business Energy Manager.</p> <p><b>First Name</b></p> <input type="text"/>
Step 2 User Information	
Step 3 Company Information (Optional)	
Step 4 Email Confirmation	
<p><b>Last Name</b></p> <input type="text"/>	
<p><b>Job Title</b></p> <input type="text"/>	
<p>e.g. Facility Manager, Owner, Office Manager, Contractor (optional)</p>	
<p><b>Phone Number</b></p> <input type="text"/>	
<p>10 digit phone number (optional)</p>	
<p><b>Extension</b></p> <input type="text"/>	
<p>Phone number extension (optional)</p>	
<p><b>Email Address</b></p> <input type="text"/>	
<p>Please add system@agentsenergy.com to your address book or safe sender list to ensure verification email delivery.</p>	
<p><b>Password</b></p> <input type="password"/>	
<p>Password must contain 3 of the following 4 complexities: at least one uppercase letter, at least one lowercase letter, at least one digit character, at least one special character</p>	
<p><b>Confirm Password</b></p> <input type="password"/>	
<p><input type="checkbox"/> I Agree to Terms of Service</p>	
<p><a href="#">Continue to Step 3</a></p>	

**3** Complete your Business Profile for customized solutions.

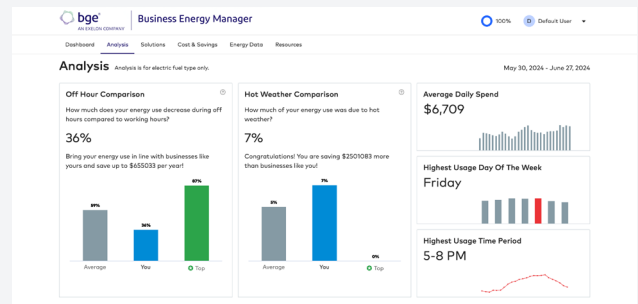
Step 1 BGE Account Information	<p>The more we know about your company, the better we can help you reduce energy. Please provide the following information.</p> <p><b>Square Footage of Your Business Location</b></p> <input type="text"/>
Step 2 User Information	
Step 3 Company Information (Optional)	
Step 4 Email Confirmation	
<p><b>Number of Employees at Your Business Location</b></p> <input type="text"/>	
<p><b>Business Type for Your Location</b></p> <input type="text" value="Food Sales"/>	
<p><a href="#">Continue to Step 4</a> <a href="#">Skip this step</a></p>	

**4** Confirm your email address—and start exploring BGE Business Energy Manager.

Step 1 BGE Account Information	<p><b>Your Account is Set Up!</b></p> <p>We just sent you an email to confirm your email address. Please add system@agentsenergy.com to your address book or safe sender list to ensure verification email delivery.</p> <p>Click the confirmation link inside to activate your account and login.</p> <p style="text-align: center;"><a href="#">Go to Login</a></p>
Step 2 User Information	
Step 3 Company Information (Optional)	
Step 4 Email Confirmation	

## Take an inside look at your energy use

- **Dashboard** – Get high-level insights, set up your Business Profile and see how your energy use compares to last year.
- **Solutions** – Learn about no- and low-cost energy efficiency strategies as well as incentives available through BGE's Smart Energy Savers Program®.



- **Analysis** – Dive deeper into your energy use and see how you stack up against similar businesses.
- **Account ranking** – Manage multiple BGE accounts, compare energy costs per square foot and review off-hour usage and weather-related variances.

Have questions about BGE Business Energy Manager? Need help enrolling? Contact BGE at **1-800-265-6177** or email us at [BusinessCustomerService@BGE.com](mailto:BusinessCustomerService@BGE.com).

EmPOWER Maryland programs are funded by a charge on your energy bill. EmPOWER programs can help you reduce your energy consumption and save you money. To learn more about EmPOWER and how you can participate, go to [BGESmartEnergy.com](https://www.bgesmartenergy.com).

BGE-CI-BEM-012026